



Pedagogical Values Series:

Flexible and supportive teaching

September 30, 2020

Facilitators:

- Dr. Lauren Halcomb-Smith, CTET
- Dr. Sophia Palahicky, SET & CTET



Royal Roads
UNIVERSITY

ACKNOWLEDGMENT OF TRADITIONAL LANDS

Royal Roads University acknowledges that the campus is located on the traditional lands of the Xwsepsum (Esquimalt) and Lekwungen (Songhees) ancestors and families who have lived here for thousands of years.

This land has been part of the fabric of the life of Indigenous communities long before Hatley Castle was built, and it will be long into the future. It is with gratitude that we now learn and work here, where the past, present and future of Indigenous and non-Indigenous students, faculty and staff come together.

Hay'sxw'qa si'em!

The Pedagogical Values Series



Learning, Teaching, & Research Model (LTRM)

APPLIED & AUTHENTIC

- Interdisciplinary and transdisciplinary
- Experiential and participatory
- Flexible and individualized
- Outcomes-based
- Openly practiced

CARING & COMMUNITY-BASED

- Inclusive and diverse
- Community-based learning
- Supportive
- Team-based
- Co-creative
- Place- and virtual space-based

TRANSFORMATIONAL

- Socially innovative
- Respectful of Indigenous Peoples and traditions
- Impactful
- Reflective

Pedagogical Values

Pedagogical values refer to the worldviews, beliefs, perspectives, and biases about teaching and learning that underpin our specific educational practices (Palahicky et al., 2017). In other words, they are the belief systems that inform the decisions that we make at the micro and macro level of our teaching, from how we design learning experiences to how we interact and engage with learners.

“Teaching today demands flexible and supportive approaches”



Sophia Palahicky, EdD

- RRU Associate Faculty
- School of Education & Technology (SET)

Context

1. Graduate students in the instructional design certificate program
2. Health care professionals who provide training in the health care sector
3. Professionals working in a variety of areas, i.e., government, business, profit, nonprofit, education, etc.

Context

1. Graduate students in the instructional design certificate program
2. Health care professionals who provide training in the health care sector
3. Professionals working in a variety of areas, i.e., government, business, profit, nonprofit, education, etc.
4. Instructors in higher education coming from face to face institutions
5. University and college staff working in teaching and learning centres
6. Living within Canada and across provinces



In their words...

1. I am frustrated.
2. I have too much on my plate.
3. I am not being supported at work.
4. I am having some personal challenges.
5. I am in the middle of moving.
6. I cannot focus on anything.





How are you feeling?

keen	certain	tense
optimistic	amazed	skeptical
concerned	receptive	uneasy
fascinated	elated	pessimistic
confident	ecstatic	inferior
intrigued	relaxed	doubtful
inquisitive	understanding	worried
curious	energetic	reluctant



How are you feeling?

Interest	Openness	Uncertainty
keen	certain	tense
optimistic	amazed	skeptical
concerned	receptive	uneasy
fascinated	elated	pessimistic
confident	ecstatic	inferior
intrigued	relaxed	doubtful
inquisitive	understanding	worried
curious	energetic	reluctant



Support is...





1



potential



desire



drive



execution

2



nurturing



fostering



guiding



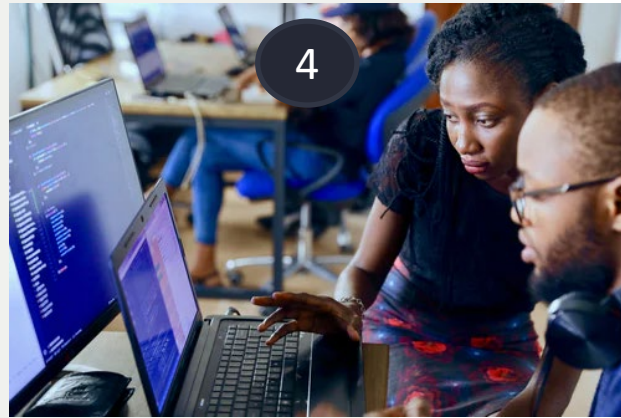
enabling



Flexibility is...



"Photovoice is a participatory action research method that employs photography and group dialogue as a means for marginalized individuals to deepen their understanding of a community issue or concern" ([Empowering the Spirit](#)).





Support

Flexibility

synonyms

synonyms



When we apply these...

Support

Flexibility

How do we struggle with these?

Our reputation

Covering the curriculum

Quality

Academic standards

Fairness

Time

Q & A

What do we need to keep front of mind when supporting students who “seem” to have it all together?

What can we do to demonstrate we “get it” when students share their personal issues with us?

How do we ensure we don’t take on too much or overstep our responsibilities in a flexible and supportive space?

Thank you!



ctet.royalroads.ca